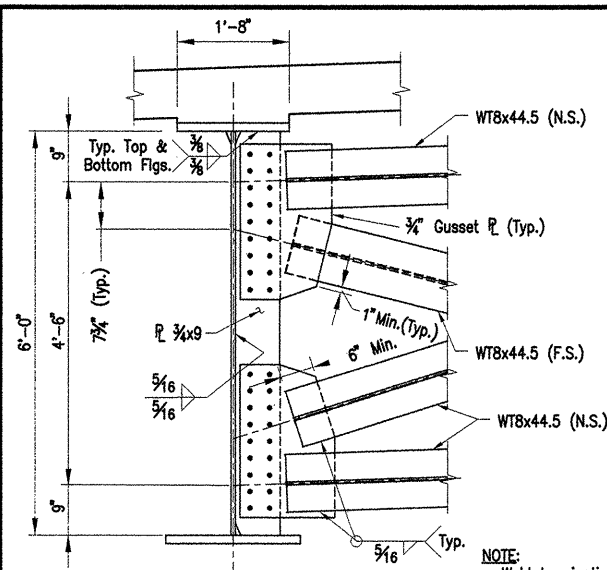
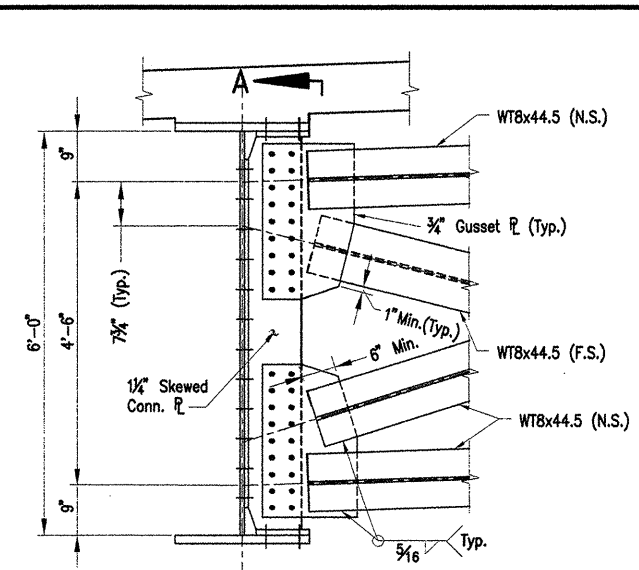


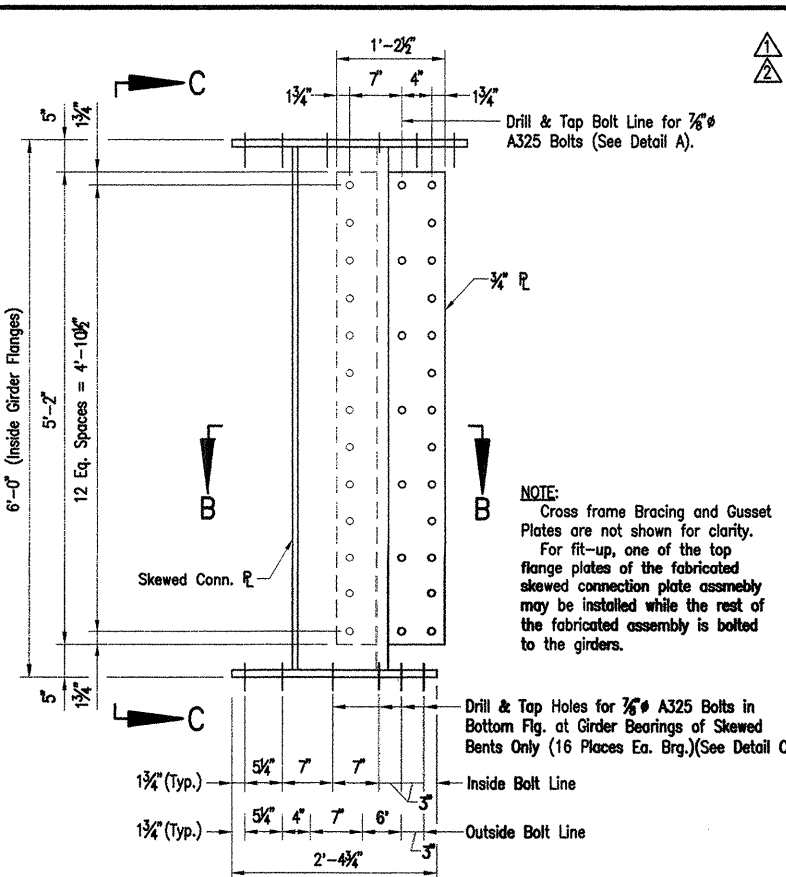
DATE REVISION	DATE FILMED	DATE REVISION	DATE FILMED	FED. ROAD NO.	STATE	FED. AID PROJ. NO.	SHEET NO.	TOTAL SHEETS
11-30-11		6/2010			ARK.			
2-3-12								
				JOB NO.	110395	96		
				06830	386' UNIT	47090		



TYPICAL RADIAL CROSSFRAME CONNECTION (EXT. GIRDER SHOWN)
Looking Forward
Scale: 3/4" = 1'-0"



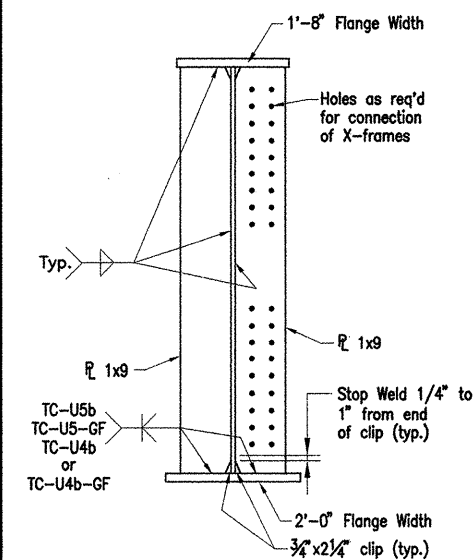
TYPICAL SKEWED CROSSFRAME CONNECTION (EXT. GIRDER SHOWN)
Looking Forward
Scale: 3/4" = 1'-0"



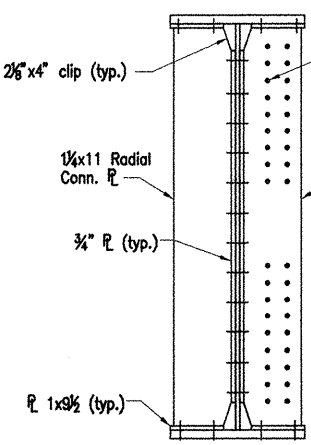
SECTION A-A
Scale: 1" = 1'-0"

SECTION C-C
Scale: 1" = 1'-0"

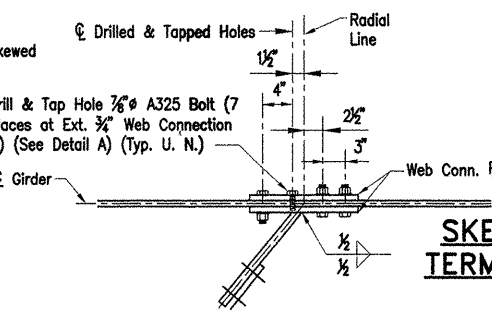
DETAIL B
Scale: 1" = 1'-0"



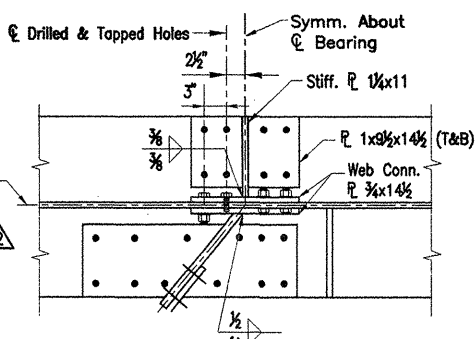
END BEARING STIFFENER DETAILS (EXT. GIRDER SHOWN)
Scale: 3/4" = 1'-0"



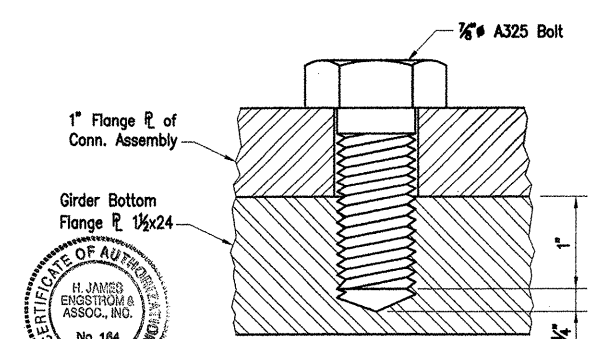
INTERIOR BEARING STIFFENER DETAILS (EXT. GIRDER SHOWN)
Scale: 3/4" = 1'-0"



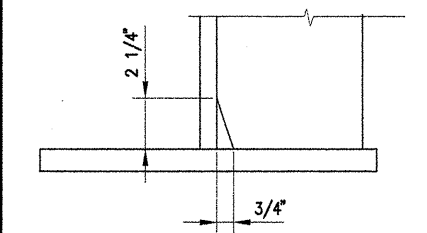
SKEWED STIFFENER TERMINATION DETAILS
Scale: 1" = 1'-0"



DETAIL A
Scale: 1" = 1"



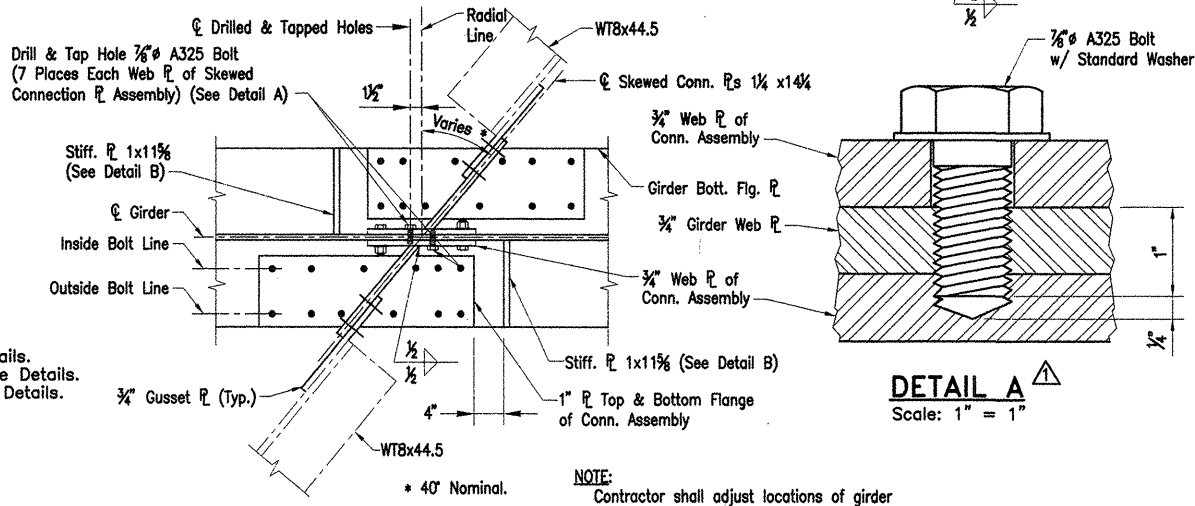
DETAIL C
Scale: 1" = 1"



3/4" x 2 1/4" CLIP DETAIL
Scale: N.T.S.

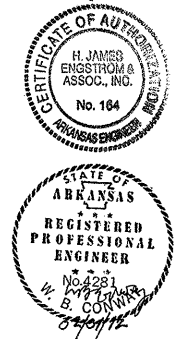
- NOTES:**
1. All Steel To Be AASHTO M270, GR.50W.
 2. See Dwg. No. 47085 For General Notes.
 3. See Dwg. No. 47102 - 47103 For Bearing Details.
 4. See Dwg. No. 47089 For Additional Cross Frame Details.
 5. See Dwg. Nos. 47095 to 47097 For Expansion Details.

- Revised 'Detail A' & 'Detail C' by HJE/MM
GPT 11-30-11
- Added Skewed Stiff. Termination Details by HJE/MM
GPT 2-1-12



SECTION B-B
Scale: 1" = 1'-0"

NOTE:
Contractor shall adjust locations of girder flange bolts shown in Section A-A as required to adequately clear skewed crossframe connection plates due to varying angle.



ALTERNATE NO. 1 & 2
DETAILS OF 386' CONT. COMP. PLATE GIRDER UNIT (SHEET 6 OF 11)

WHITE RIVER STR. & APPRS.
(CLARENDON) (PH III) (F)
MONROE COUNTY
ROUTE 79 SEC. 13
ARKANSAS STATE HIGHWAY COMMISSION
LITTLE ROCK ARK.

Engstrom/Modjeski and Masters, Inc.

DRAWN BY: GPT DATE: Sep. 10 FILENAME: b11039514_s06
CHECKED BY: WBC DATE: Sep. 10 SCALE: 3/4" = 1'-0"
DESIGNED BY: GPT DATE: Sep. 10
BRIDGE NO. 06830 DRAWING NO. 47090

BRIDGE ENGINEER